

Now taking submissions for the



women's only

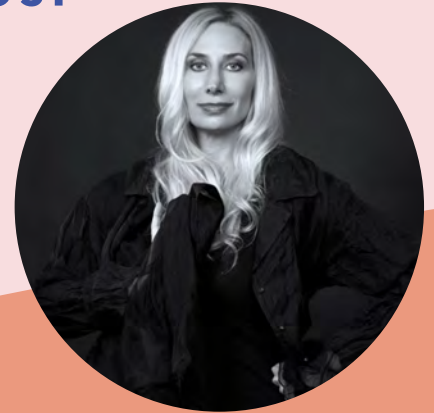
Women of Resilience
chapbook contest

PRIZES AWARDED:

1st Place: \$200 & 100
copies of their SCE
published chapbook

2nd Place: \$100

3rd Place: \$50



Hosted by the Southern
Collective Experience and
Judged by Melissa Studdard!

Winner will be announced on April 15th, 2020

Submission Fee is \$25. Please submit 25 total PAGES of poetry that highlight the resilience of women while overcoming obstacles along their journey to seek joy & fulfillment.*

Window for submissions runs from
November 5th, 2019, until March 31st, 2020.

For additional contest rules & conditions, please go to

<http://bluemountainreview.submittable.com/submit/143393/wowen-of-resilience-chapbook-contest-25>

*This contest is open to women only. Contest is not open to SCE members.